

Integrating Local Community Involvement in Global Sustainable Tourism Practices: Challenges and Solutions

Lasisi Abiodun Latifat¹, Professor Mohammed Afolabi Oladoja², Adedayo Oluwatoyin Lydia Ph.D³

Department of Tourism Management Technology, Yaba College of Technology, Lagos Nigeria¹, Department of Agricultural Extension and Rural Sociology, Olabisi Onabanjo University, Ago-Iwoye Nigeria², Department of Tourism Management Technology, Yaba College of Technology, Lagos Nigeria³

Received: 10.04.2026 | Accepted: 27.05.2026 | Published: 01.06.2026

*Corresponding Author: Lasisi Abiodun Latifat

DOI: [10.5281/zenodo.20473863](https://doi.org/10.5281/zenodo.20473863)

Abstract

Original Research Article

Sustainable tourism has become an important global development strategy because of its potential to support economic growth, cultural preservation, environmental protection, and social inclusion. However, the success of sustainable tourism depends largely on the meaningful involvement of local communities in tourism planning, implementation, governance, ownership, and benefit-sharing. In many destinations, sustainable tourism initiatives are still designed through top-down approaches that treat local communities as passive beneficiaries rather than active decision-makers. This paper examines the integration of local community involvement in global sustainable tourism practices using a secondary-data-based qualitative research design. The study draws on peer-reviewed literature, international tourism frameworks, policy documents, destination management standards, and published case studies. Thematic analysis was used to identify recurring issues related to community participation, tourism governance, cultural preservation, benefit-sharing, environmental stewardship, and sustainable destination management. The findings show that major challenges include tokenistic participation, unequal power relations, limited financial and technical capacity, weak governance, cultural commodification, revenue leakage, exclusion of marginalized groups, and conflicts between global sustainability standards and local realities. The paper proposes solutions such as participatory planning, community ownership models, equitable revenue-sharing, capacity-building, inclusive governance, cultural protection protocols, local supply-chain development, digital empowerment, and community-based monitoring. The study concludes that sustainable tourism cannot be achieved through policy declarations, certification systems, or destination branding alone. Genuine sustainability requires that local communities be placed at the center of tourism development as co-creators, rights-holders, custodians, and primary beneficiaries.

Keywords: sustainable tourism, local community involvement, community-based tourism, participatory planning, tourism governance, cultural preservation, destination management.

Copyright © 2026 The Author(s). This is an open-access article distributed under the terms of the Creative Commons Attribution-NonCommercial 4.0 International License (CC BY-NC 4.0).

1. Introduction

Tourism is one of the most influential sectors in the global economy. It contributes to employment

creation, foreign exchange earnings, infrastructure development, cultural exchange, and local business growth. In many developing and developed



Citation: Latifat, L. A., Oladoja, M. A., & Lydia, A. O. (2026). Integrating local community involvement in global sustainable tourism practices: Challenges and solutions. *GAS Journal of Engineering and Technology (GASJET)*, 3(6), 1-16.

countries, tourism is promoted as a tool for economic diversification and regional development. However, tourism can also generate significant negative impacts when it is poorly planned or excessively market-driven. These impacts include environmental degradation, overcrowding, waste generation, rising living costs, cultural commodification, water scarcity, land-use conflict, and social inequality (Dodds & Butler, 2019; Mowforth & Munt, 2016). Sustainable tourism emerged as a response to these challenges. It seeks to balance economic benefits with environmental protection, cultural preservation, and social equity. Sustainable tourism is not limited to ecotourism or nature-based travel; rather, it applies to all forms of tourism, including urban tourism, rural tourism, cultural tourism, heritage tourism, coastal tourism, religious tourism, and mass tourism. The United Nations World Tourism Organization has emphasized that tourism can contribute to sustainable development when it supports job creation, local culture, environmental protection, and responsible consumption (UNWTO, 2004, 2013). The concept of sustainable tourism is closely linked to the United Nations Sustainable Development Goals (SDGs), particularly those relating to poverty reduction, decent work, responsible consumption and production, gender equality, climate action, and the protection of terrestrial and marine ecosystems (United Nations, 2015). However, sustainable tourism cannot be achieved through environmental management alone. It requires social inclusion, participatory governance, and equitable distribution of benefits among those who host and sustain tourism destinations.

Local communities are central to sustainable tourism because they are the long-term custodians of the destination. They preserve cultural heritage, manage traditional knowledge, interact with visitors, provide labor, maintain local identity, and experience the everyday impacts of tourism development. When communities are excluded from tourism planning, the result is often conflict, resentment, cultural erosion, environmental pressure, and unequal benefit distribution. Scheyvens (1999) argued that tourism initiatives should not be considered successful unless local communities have some control over them and receive equitable benefits. Similarly, Tosun (2000)

observed that community participation in tourism development is often limited by structural, operational, and cultural barriers, particularly in developing countries. Although global sustainable tourism frameworks increasingly recognize the importance of host communities, many destinations still apply top-down approaches to tourism development. Local residents may be consulted only after key decisions have already been made. They may also be employed in low-paying jobs while being excluded from ownership, governance, and profit-sharing. This creates a gap between the principles of sustainable tourism and the lived experiences of local communities. This paper examines how local community involvement can be integrated into global sustainable tourism practices. It identifies the major challenges that prevent meaningful community participation and proposes practical solutions for strengthening inclusive, community-centered tourism development.

1.1 Problem Statement

Although sustainable tourism has become a major global policy goal, many tourism destinations continue to experience unequal benefit distribution, environmental pressure, cultural disruption, and weak community participation. International organizations, governments, and destination managers often promote sustainable tourism as a solution to the negative impacts of conventional tourism. However, many sustainability initiatives remain ineffective because they are designed without meaningful local participation. Local communities are often presented as beneficiaries of tourism rather than as active decision-makers. This creates several problems. First, tourism benefits may be captured by external investors, large hotel chains, tour operators, or government agencies while local residents bear the social and environmental costs. Second, cultural traditions may be commercialized without adequate community consent or control. Third, conservation policies may restrict local access to land, forests, rivers, or cultural sites without providing fair compensation. Fourth, tourism planning may ignore local knowledge about ecosystems, heritage, social relations, and land use. The central problem addressed in this paper is the limited integration of

local community involvement in sustainable tourism practices. Sustainable tourism cannot be fully achieved if communities are excluded from decision-making, ownership, governance, monitoring, and benefit-sharing. This paper argues that global sustainable tourism efforts must move beyond symbolic consultation and adopt community-centered models that recognize local people as co-creators and custodians of tourism development.

2. Literature Review

2.0 Concept of Sustainable Tourism

Sustainable tourism refers to tourism that considers its current and future economic, social, cultural, and environmental impacts while addressing the needs of visitors, tourism businesses, host communities, and the environment. Butler (1999) described sustainable tourism as a complex and evolving concept that requires more than environmental protection; it also requires attention to social, cultural, and economic systems. Sustainable tourism therefore involves balancing visitor satisfaction, business profitability, environmental conservation, cultural preservation, and community well-being. The three major dimensions of sustainable tourism are economic sustainability, environmental sustainability, and socio-cultural sustainability. Economic sustainability focuses on employment, income generation, local entrepreneurship, and long-term destination competitiveness. Environmental sustainability focuses on biodiversity conservation, waste management, resource efficiency, pollution reduction, and climate responsibility. Socio-cultural sustainability focuses on heritage protection, community identity, social justice, resident well-being, and cultural respect (Mowforth & Munt, 2016; Sharpley, 2009). However, the implementation of sustainable tourism is often difficult. A destination may generate economic benefits while damaging local ecosystems. Another destination may protect natural resources while excluding local communities from decision-making. A tourism project may promote cultural heritage for visitors while changing the meaning of that heritage for residents. For this reason, sustainable tourism must be understood as a continuous governance process rather than a fixed

outcome.

2.1 Local Community Involvement in Tourism

Local community involvement refers to the active participation of residents and community groups in tourism-related decision-making and activities. It includes participation in planning, policy-making, employment, entrepreneurship, cultural interpretation, environmental conservation, monitoring, and benefit-sharing. Local communities may include Indigenous groups, women, youth, elders, farmers, fishers, artisans, local business owners, informal workers, and civil society organizations.

Community participation can occur at different levels. At the lowest level, communities may simply be informed about tourism projects. At a moderate level, they may be consulted or employed. At a higher level, they may share decision-making authority, own tourism enterprises, co-manage resources, and influence how benefits are distributed. Meaningful participation requires access to information, decision-making power, financial resources, legal protection, institutional representation, and accountability mechanisms (Cole, 2006; Tosun, 2000). Tosun (2000) identified several limitations to community participation in tourism development, including centralized public administration, lack of coordination, limited financial resources, lack of expertise, elite domination, and low levels of community awareness. These barriers show that participation is not simply a matter of inviting residents to meetings. Instead, participation requires institutional reform, capacity-building, and redistribution of power.

2.2 Community-Based Tourism

Community-based tourism is a model of tourism development in which local communities have significant control over tourism activities and receive substantial benefits from them. It is often associated with rural tourism, Indigenous tourism, cultural tourism, ecotourism, and heritage tourism. Community-based tourism aims to empower communities economically, socially, culturally, and

politically. Okazaki (2008) developed a community-based tourism model that connects community participation, empowerment, and sustainable tourism development. The model emphasizes the need to move beyond passive involvement toward participatory planning and local control. Similarly, Dangi and Jamal (2016) argued that sustainable community-based tourism requires an integrated approach that includes equity, justice, ethics, governance, and local empowerment. Community-based tourism can generate employment, reduce poverty, support local entrepreneurship, preserve cultural traditions, and encourage environmental conservation. It can also strengthen community pride and provide opportunities for women, youth, artisans, farmers, and other local groups. However, community-based tourism is not automatically successful. Some projects fail because of poor management, internal conflict, lack of marketing, limited finance, weak infrastructure, or dependency on external donors (Goodwin, 2016; Simpson, 2008).

2.3 Sustainable Destination Governance

Destination governance refers to the structures, institutions, rules, relationships, and decision-making processes through which tourism destinations are planned and managed. Sustainable destination governance requires cooperation among government agencies, local communities, tourism businesses, conservation bodies, cultural institutions, civil society organizations, and visitors. Bramwell and Lane (2011) argued that governance is central to sustainable tourism because it shapes how decisions are made, whose interests are represented, and how sustainability goals are implemented. Effective governance can improve coordination, transparency, accountability, and democratic participation. In contrast, weak governance can lead to fragmented policies, corruption, poor enforcement, and exclusion of local stakeholders. Community involvement improves destination governance by ensuring that tourism decisions reflect local realities. Residents can identify social, cultural, and environmental problems that external planners may overlook. They can also contribute local knowledge about heritage sites, ecosystems, seasonal changes, visitor behavior, and community priorities. Inclusive

governance therefore strengthens both the legitimacy and effectiveness of sustainable tourism.

3. Methodology

3.0 Research Design

This study adopted a secondary-data-based qualitative research design. This approach was selected because the study focuses on analyzing existing knowledge, policy frameworks, and documented experiences related to community involvement in sustainable tourism. A secondary-data approach is suitable for examining global sustainable tourism practices because it allows the researcher to compare findings across different countries, destinations, and tourism contexts without conducting primary fieldwork. The study is interpretive in nature. It does not test a statistical hypothesis or generate numerical findings. Instead, it identifies recurring themes, meanings, challenges, and solutions found in academic literature, policy documents, international frameworks, and published case studies.

3.1 Sources of Data

The study relied on secondary sources, including peer-reviewed journal articles, academic books, international tourism reports, sustainable destination standards, government tourism policies, and published case studies. The selected sources focused on sustainable tourism, community-based tourism, participatory planning, destination governance, cultural preservation, environmental management, benefit-sharing, and local empowerment. Important scholarly sources included works by Scheyvens (1999), Tosun (2000), Okazaki (2008), Bramwell and Lane (2011), Dangi and Jamal (2016), and Choi and Sirakaya (2006). Institutional sources included documents from the United Nations, UNWTO, and the Global Sustainable Tourism Council.

3.2 Sampling Procedure

A purposive sampling method was used to select documents that directly addressed local community

involvement and sustainable tourism. The selection was based on relevance, credibility, and thematic

connection to the study objectives. The document sample was organized as follows:

Data Source	Approximate Number
Peer-reviewed journal articles	40–60
International organization reports	8–12
Government and policy documents	5–8
Published destination case studies	10–15
Sustainable tourism frameworks and standards	3–5

This sample provided a broad basis for analyzing community involvement in sustainable tourism from academic, institutional, and practical perspectives.

3.3 Data Analysis

The study used thematic analysis. Thematic analysis is appropriate for identifying, organizing, and interpreting recurring patterns in qualitative data. The analysis was conducted in four stages.

First, the selected documents were reviewed to identify relevant information on local community involvement in sustainable tourism. Second, key ideas were coded according to recurring concepts such as participation, governance, benefit-sharing, cultural protection, environmental stewardship, local ownership, and capacity-building. Third, related codes were grouped into broader themes. Fourth, the themes were interpreted in relation to the research questions and study objectives.

The main themes identified were:

1. Importance of community involvement.
2. Challenges to community participation.
3. Solutions for inclusive sustainable tourism.

4. Framework for community-integrated tourism development.

3.4 Limitations of the Methodology

The study relies on secondary data and does not include original interviews, surveys, or field observations. Therefore, it does not provide new empirical evidence from a specific destination. Another limitation is that published documents may not fully capture the lived experiences of marginalized groups whose voices are often underrepresented in official reports and academic research. However, the secondary-data approach is useful for identifying broad patterns across different destinations and for developing a conceptual framework for community-integrated sustainable tourism.

4. Findings

This section presents the major findings from the thematic analysis of secondary sources on local community involvement in sustainable tourism. The findings are organized according to the key themes that emerged from the reviewed literature, policy documents, and sustainable tourism frameworks.

4.1 Local Community Involvement Enhances Tourism Legitimacy

The first finding shows that local community involvement improves the legitimacy and social acceptance of tourism development. Tourism activities affect residents' everyday lives through changes in land use, employment, public spaces, housing, prices, traffic, cultural practices, and environmental quality. When communities are excluded from planning, tourism may be perceived as externally imposed. The reviewed literature shows that residents are more likely to support tourism initiatives when they are involved in decision-making from the early stages. Community participation allows local people to express their expectations, concerns, values, and development priorities. It also helps tourism planners understand local realities that may not be visible in national or international policy frameworks.

4.2 Community Participation Supports Economic Equity

The second finding reveals that community involvement can improve the distribution of tourism benefits. Tourism can generate income and employment, but these benefits are often unevenly distributed. In many destinations, external investors, hotel chains, tour operators, and urban-based businesses capture a large share of tourism revenue, while local residents remain concentrated in low-wage employment. The reviewed sources indicate that local participation can reduce economic inequality by promoting community ownership, local procurement, small tourism enterprises, cooperative businesses, homestays, craft markets, guiding services, and locally managed cultural experiences. When communities are included in tourism planning and benefit-sharing, tourism is more likely to contribute to local livelihoods.

4.3 Community Involvement Protects Cultural Heritage

The third finding shows that community involvement is important for cultural preservation. Culture is a major attraction in many destinations,

including festivals, food, music, traditional crafts, architecture, rituals, language, storytelling, and Indigenous knowledge. However, tourism can also commercialize or distort local culture when communities do not control how their heritage is represented. The reviewed literature shows that local communities should have authority over which cultural practices can be shared with visitors, how they should be interpreted, and which traditions should remain private or sacred. Community involvement therefore helps protect cultural authenticity and reduces the risk of cultural commodification.

4.4 Community Participation Strengthens Environmental Stewardship

The fourth finding indicates that local communities play an important role in environmental protection. Many communities possess detailed knowledge of landscapes, biodiversity, water sources, forests, sacred natural sites, farming systems, fishing areas, wildlife patterns, and seasonal environmental changes. The reviewed sources suggest that involving communities in environmental monitoring, conservation activities, visitor management, waste reduction, and resource protection can improve sustainable tourism outcomes. This is especially important in ecotourism, protected-area tourism, rural tourism, and nature-based destinations where local livelihoods are closely connected to natural resources.

4.5 Community Involvement Improves Destination Resilience

The fifth finding shows that community involvement strengthens destination resilience. Tourism destinations face risks such as climate change, pandemics, economic crises, natural disasters, political instability, and changes in tourist demand. The reviewed literature indicates that destinations with active local participation are better able to adapt to these shocks because communities develop skills, local enterprises, diversified livelihoods, and stronger social networks. Community-based tourism, local entrepreneurship, agricultural linkages, cultural

enterprises, and cooperative management can help destinations become more resilient.

4.6 Tokenistic Participation Remains a Major Challenge

The sixth finding reveals that many tourism initiatives still practice tokenistic participation. In such cases, communities are invited to meetings or consultations but have little real influence over final decisions. Participation may be used to create the appearance of inclusion while actual decision-making remains controlled by government agencies, investors, or external consultants. The reviewed literature shows that tokenistic participation weakens trust and may increase community resistance. Genuine participation requires that community input influence planning, budgeting, implementation, monitoring, and evaluation.

4.7 Unequal Power Relations Limit Community Participation

The seventh finding shows that unequal power relations are a major barrier to meaningful community involvement. Tourism development involves different stakeholders, including governments, investors, tour operators, international organizations, NGOs, and local residents. These stakeholders do not have equal access to finance, legal knowledge, political influence, technical expertise, or tourism markets. The reviewed sources indicate that communities may accept unfavorable tourism arrangements because they lack bargaining power. This can result in unfair wages, land-use conflict, cultural exploitation, exclusion from profitable tourism activities, and weak benefit-sharing.

4.8 Limited Financial and Technical Capacity Restricts Local Involvement

The eighth finding indicates that many communities lack the financial and technical capacity needed to participate effectively in tourism. Starting and managing tourism enterprises requires capital, infrastructure, training, marketing skills, sanitation facilities, safety systems, digital tools, accounting

knowledge, and customer service skills. The reviewed literature shows that communities may have strong cultural and environmental knowledge but lack formal tourism management capacity. Without adequate support, local communities may remain dependent on external investors or may be unable to meet visitor expectations and sustainability standards.

4.9 Weak Governance and Poor Coordination Affect Sustainable Tourism

The ninth finding shows that weak governance limits the effectiveness of community involvement. Sustainable tourism requires coordination among tourism ministries, local governments, environmental agencies, cultural heritage institutions, private businesses, community organizations, and civil society groups.

The reviewed sources reveal that poor coordination can lead to policy fragmentation, weak enforcement, lack of transparency, corruption, unclear responsibilities, and limited accountability. When local communities are excluded from governance institutions, tourism decisions may fail to reflect local priorities.

4.10 Revenue Leakage Reduces Local Benefits

The tenth finding indicates that revenue leakage remains a major problem in sustainable tourism. Tourism income may leave the destination through foreign-owned hotels, imported goods, external tour operators, centralized booking platforms, and profit repatriation. The reviewed literature shows that even destinations with high tourist arrivals may fail to reduce local poverty if communities are not integrated into the tourism value chain. Local procurement, community enterprises, and locally owned tourism services are therefore necessary to retain economic benefits within host communities.

4.11 Cultural Commodification Threatens Community Identity

The eleventh finding shows that cultural commodification is a significant challenge. Tourism can transform cultural practices into marketable

products that may lose their original meaning. Sacred rituals, traditional clothing, music, festivals, and Indigenous knowledge may be altered to satisfy tourist expectations. The reviewed sources indicate that cultural commodification can create internal community conflict, especially when some groups benefit economically while others feel that cultural values are being disrespected. This finding highlights the need for cultural protocols and community consent.

4.12 Marginalized Groups Are Often Excluded

The twelfth finding reveals that community participation does not always include all community members. Women, youth, Indigenous peoples, poorer households, informal workers, migrants, and persons with disabilities may be excluded from tourism decision-making and benefit-sharing. The reviewed literature shows that local elites may capture tourism benefits by controlling committees, land, business permits, or relationships with government officials. Therefore, sustainable tourism must include deliberate strategies to ensure inclusive representation.

4.13 Global Standards May Conflict With Local Realities

The final finding shows that global sustainable tourism standards may not always fit local contexts. Certification systems and sustainability frameworks may require documentation, technical reporting, financial resources, and institutional capacity that small community enterprises may not possess. The reviewed sources suggest that global standards are useful for guiding sustainable tourism, but they must be adapted to local economic, cultural, and institutional realities. Otherwise, they may exclude the communities they are intended to support.

5. Discussion

The findings show that local community involvement is central to the success of sustainable tourism. Sustainable tourism is often described through environmental, economic, and socio-cultural

dimensions, but these dimensions cannot be achieved without meaningful local participation. Communities are not simply part of the tourism environment; they are active custodians of the cultural, social, and natural resources that tourism depends on. The finding that community involvement enhances legitimacy supports the argument that tourism planning must move beyond top-down models. When tourism is planned without local participation, it may generate resistance even when it is promoted as sustainable. This agrees with Jamal and Getz's (1995) view that collaboration is essential in community tourism planning because tourism involves multiple stakeholders with different interests. It also supports Tosun's (2000) argument that community participation is often limited by structural and operational barriers.

The finding that community participation supports economic equity is also significant. Tourism can generate income, but the presence of tourism revenue does not automatically mean local development. If profits are captured by external actors, tourism may reproduce inequality. This supports Scheyvens' (1999) argument that tourism should empower communities economically, socially, psychologically, and politically. It also aligns with Ashley et al. (2001), who argued that tourism can contribute to poverty reduction only when strategies deliberately increase benefits for poor communities. The findings also show that cultural preservation depends on community control. Tourism often uses local culture as an attraction, but this can become exploitative when communities do not decide how their heritage is represented. Cultural commodification occurs when traditions are reshaped primarily for tourist consumption. Therefore, sustainable cultural tourism requires community consent, cultural protocols, and respect for sacred or private traditions. Environmental stewardship is another important issue. The findings indicate that local communities possess ecological knowledge that can strengthen sustainable tourism management. This is particularly relevant in ecotourism, rural tourism, coastal tourism, and protected-area tourism. When communities benefit from environmental conservation, they are more likely to support resource protection. However, when

conservation policies restrict local livelihoods without fair benefits, they may create conflict.

The challenges identified in the findings reveal that community participation is often constrained by power, finance, capacity, and governance. Tokenistic participation is especially problematic because it creates the appearance of inclusion without transferring real influence to local people. This suggests that sustainable tourism policies should not measure participation only by the number of meetings held or consultations conducted. Instead, participation should be evaluated by whether communities influence decisions, budgets, policies, and outcomes. Unequal power relations remain one of the strongest barriers to community-centered tourism. Governments, investors, and tour operators often have more access to resources and decision-making platforms than local residents. This imbalance can lead to unfair agreements, land conflicts, and weak benefit-sharing. To address this, communities need legal support, institutional representation, negotiation training, and access to finance. The findings on limited financial and technical capacity also show that community involvement must be supported by long-term capacity-building. It is not enough to ask communities to participate if they do not have the resources, skills, or infrastructure needed to engage effectively. Training should go beyond hospitality and customer service to include leadership, accounting, digital marketing, environmental management, legal rights, and enterprise development. Weak governance and poor coordination also reduce the effectiveness of sustainable tourism. Sustainable tourism requires cooperation among tourism agencies, environmental institutions, cultural bodies, local governments, businesses, and communities. If these actors work separately, sustainability policies may become fragmented. Inclusive destination governance is therefore necessary to improve coordination, transparency, and accountability.

The finding on revenue leakage confirms that sustainable tourism must focus on local value retention. A destination may receive many tourists but still fail to improve local livelihoods if most revenue leaves the area. Strengthening local supply

chains, supporting community enterprises, and encouraging local procurement can reduce leakage and improve economic benefits for host communities. The exclusion of marginalized groups is another critical issue. The term “community” should not be treated as if all residents have equal power or shared interests. Communities contain internal differences based on gender, age, class, ethnicity, disability, land ownership, and political influence. Sustainable tourism must therefore include deliberate measures to prevent elite capture and ensure that women, youth, Indigenous groups, poorer households, and informal workers are represented. Finally, the findings show that global sustainability standards are useful but must be adapted to local realities. International standards provide important guidance, but they may be difficult for small community enterprises to apply without support. Therefore, sustainable tourism frameworks should be flexible, affordable, and locally meaningful. Global standards should guide sustainability, but communities should help define what sustainability means in their own context. Overall, the discussion shows that sustainable tourism requires a shift from visitor-centered development to community-centered stewardship. Local communities should not be treated merely as attractions, workers, or beneficiaries. They should be recognized as co-creators, rights-holders, decision-makers, and custodians of tourism development.

6. Challenges of Integrating Local Communities in Sustainable Tourism

i. Tokenistic Participation

One of the most common challenges is tokenistic participation. This occurs when communities are invited to meetings or consultations but have little real influence over decisions. In such cases, participation is used to create the appearance of inclusion while actual control remains with governments, investors, or external consultants. Tokenistic participation weakens trust and reduces the credibility of sustainable tourism initiatives. Genuine participation requires that community input influence planning, budgeting, implementation,

monitoring, and evaluation (Tosun, 2000).

ii. Unequal Power Relations

Tourism development involves actors with different levels of power. Governments control permits and policies. Investors control capital. Tour operators control market access. International organizations influence sustainability standards. Local communities, especially poor and rural groups, may lack bargaining power. These unequal power relations affect who benefits from tourism and who bears its costs. Communities may accept unfavorable agreements because they lack legal knowledge, political influence, or alternative income sources. This can result in land dispossession, unfair wages, cultural exploitation, and exclusion from profitable tourism activities (Mowforth & Munt, 2016; Tosun, 2000).

iii. Limited Financial Capacity

Many communities lack the financial resources needed to participate effectively in tourism. Starting tourism businesses requires capital for accommodation, transport, safety equipment, marketing, sanitation, training, digital systems, and infrastructure. Without access to credit or grants, communities may remain dependent on external investors. Financial barriers also affect the ability of communities to meet visitor expectations. Tourists may require reliable facilities, hygiene standards, communication systems, trained guides, and safety measures. Communities therefore need investment and technical support to compete successfully in tourism markets.

iv. Limited Technical Skills

Tourism requires skills in hospitality, customer service, accounting, business planning, digital marketing, language communication, guiding, environmental management, and cultural interpretation. Many communities have valuable cultural and ecological knowledge but lack formal tourism management skills. Without training, communities may struggle to compete with

professional tourism operators or meet international standards. Capacity-building is therefore essential for meaningful participation and long-term sustainability (Choi & Sirakaya, 2006).

v. Weak Governance and Poor Coordination

Sustainable tourism requires coordination among tourism ministries, local governments, environmental agencies, cultural heritage bodies, private businesses, and community organizations. In many destinations, these institutions operate separately and sometimes pursue conflicting goals. Weak governance may result in poor enforcement of sustainability standards, corruption, lack of transparency, unclear responsibilities, and limited accountability. Bramwell and Lane (2011) emphasized that governance is essential for sustainable tourism because it determines how decisions are made and how sustainability goals are implemented.

vi. Revenue Leakage

Revenue leakage occurs when tourism income leaves the local destination through foreign-owned hotels, imported goods, external tour operators, centralized booking platforms, or profit repatriation. Leakage reduces the economic benefits available to local communities. Even when visitor numbers increase, local poverty may persist if communities are not integrated into the tourism value chain. Sustainable tourism must therefore focus not only on attracting tourists but also on retaining economic value locally (Ashley et al., 2001; Goodwin, 2016).

vii. Cultural Commodification

Cultural commodification occurs when cultural practices are packaged and sold in ways that reduce their meaning, dignity, or authenticity. Tourism may encourage communities to perform traditions according to tourist expectations rather than cultural values. This challenge can create internal conflict within communities. Some residents may welcome income from cultural tourism, while others may feel that sacred traditions are being disrespected. Cultural

protocols and community consent are therefore necessary to protect local heritage.

viii. Exclusion of Marginalized Groups

Communities are not homogeneous. Women, youth, Indigenous peoples, informal workers, migrants, poorer households, and persons with disabilities may be excluded from tourism benefits even when community participation is claimed. Local elites may capture benefits by controlling committees, land, tourism licenses, or relationships with government officials. Therefore, community involvement must be inclusive, representative, and transparent. Sustainable tourism should deliberately include marginalized voices rather than assuming that a few community leaders represent everyone.

ix. Conflict Between Global Standards and Local Realities

Global sustainable tourism standards provide useful guidance, but they may not always reflect local realities. Some standards require documentation, certification fees, technical reporting, and infrastructure that small community enterprises may not easily provide. If global standards are applied without flexibility, they may exclude the very communities they are intended to support. Sustainability frameworks must therefore be adapted to local economic, cultural, and institutional contexts while maintaining core principles of environmental protection, equity, and accountability.

x. Overtourism and Resident Pressure

Overtourism can cause overcrowding, noise, traffic congestion, waste generation, rising prices, housing shortages, and resident dissatisfaction. It shows that tourism success cannot be measured only by visitor numbers and revenue. Sustainable tourism must consider resident well-being, carrying capacity, and destination quality of life. Dodds and Butler (2019) noted that overtourism reflects failures in planning, governance, and destination management. Community-based monitoring is therefore important for identifying when tourism growth becomes

socially or environmentally harmful.

7. Solutions for Integrating Local Community Involvement

i. Participatory Tourism Planning

Participatory planning should begin before tourism projects are approved. Communities should be involved in identifying tourism opportunities, assessing risks, designing products, determining visitor limits, and setting development priorities. Participation should be accessible and inclusive. Meetings should be held in local languages, at convenient times, and in culturally appropriate formats. Women, youth, elders, Indigenous groups, informal workers, and marginalized households should be deliberately included. Participatory planning should also include feedback mechanisms so that communities can see how their views influenced final decisions. This helps build trust and strengthens the legitimacy of tourism development.

ii. Community Ownership Models

Community ownership is one of the strongest ways to ensure that tourism benefits remain local. Ownership models may include cooperatives, community trusts, village tourism associations, joint ventures, community-owned lodges, homestays, craft markets, and cultural centers. Community ownership allows residents to participate not only as workers but also as managers, entrepreneurs, investors, and decision-makers. This strengthens economic equity and local control. However, community ownership must be supported by training, transparent management, financial accountability, and conflict-resolution mechanisms.

iii. Equitable Benefit-Sharing

Tourism benefits should be distributed fairly. Benefit-sharing mechanisms can include community development funds, conservation fees, visitor levies, employment quotas, profit-sharing agreements, local procurement rules, and support for small businesses. Benefit-sharing should be transparent. Communities

should know how much tourism revenue is collected, how it is distributed, and who manages it. Funds should support priorities identified by residents, such as schools, healthcare, water systems, waste management, environmental restoration, cultural centers, and local infrastructure.

iv. Capacity-Building and Training

Capacity-building is essential for meaningful participation. Training should include hospitality, guiding, business management, accounting, digital marketing, environmental protection, language skills, customer service, safety, and cultural interpretation. Training should also focus on leadership, negotiation, governance, legal rights, and entrepreneurship. Communities need the ability to negotiate with investors, manage enterprises, and participate in policy discussions. Choi and Sirakaya (2006) emphasized the importance of sustainability indicators for managing community tourism, showing that effective participation requires systematic planning and capacity development.

v. Inclusive Destination Governance

Communities should be formally represented in destination management organizations, tourism boards, local planning committees, protected-area management bodies, and cultural heritage councils. Representation should not be symbolic. Community representatives should have voting rights, access to information, and the ability to influence decisions. Inclusive governance improves accountability and ensures that tourism policies reflect community priorities. It also allows communities to monitor tourism impacts and recommend corrective action.

vi. Cultural Protection Protocols

Communities should develop cultural protocols to guide tourism activities. These protocols can define what cultural practices may be shared, how sacred sites should be protected, when photography is allowed, who can perform rituals, how traditional knowledge should be used, and how cultural income should be shared. Cultural protocols protect

communities from exploitation and misrepresentation while helping tourists behave respectfully. They also support cultural pride and intergenerational transmission of knowledge.

vii. Strengthening Local Supply Chains

Tourism businesses should source goods and services locally wherever possible. Hotels, restaurants, tour operators, and attractions can support local farmers, fishers, artisans, transport providers, performers, guides, and service providers. Local procurement reduces revenue leakage and spreads tourism benefits across the destination. Governments and destination managers can support this through supplier databases, quality improvement programs, microfinance schemes, and market linkages.

viii. Digital Empowerment

Digital technology can help communities access tourism markets directly. Community enterprises can use websites, social media, online booking platforms, digital storytelling, mobile payments, and mapping tools to promote their products and services. However, digital empowerment requires training and infrastructure. Communities need internet access, digital literacy, photography skills, online communication ability, and fair access to booking systems. Digital tools should empower communities rather than increase dependency on external platforms that capture high commissions.

ix. Community-Based Monitoring

Sustainable tourism should be monitored from the perspective of residents, not only tourists or investors. Community-based monitoring can track employment, income distribution, waste, water use, biodiversity, cultural impacts, housing pressure, resident satisfaction, and visitor behavior. Community-based monitoring allows destinations to identify problems early and adjust tourism policies. It also strengthens accountability by giving residents a role in evaluating tourism performance.

x. Adaptive Global Standards

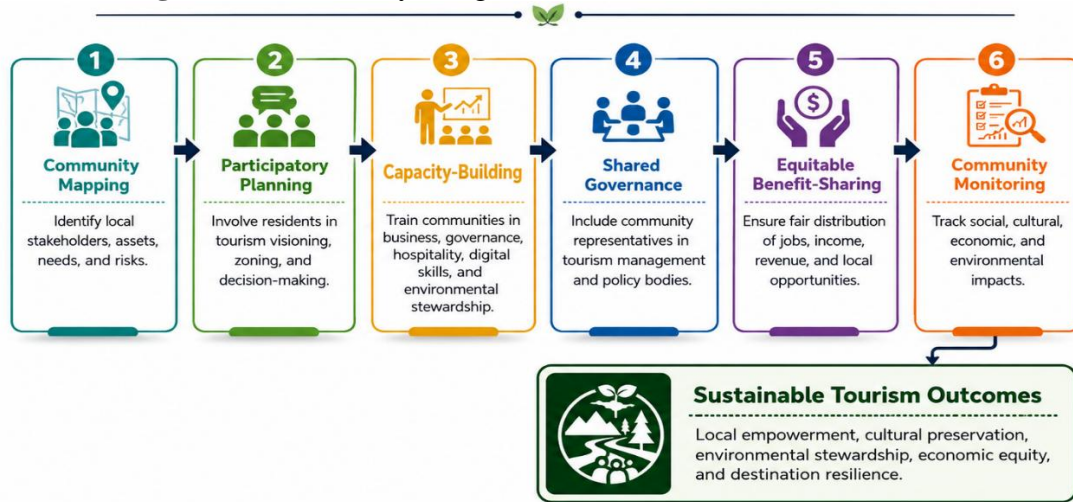
Global sustainable tourism standards should be adapted to local contexts. Certification systems should be affordable, flexible, and supportive of small community enterprises. Instead of imposing external models, sustainability frameworks should recognize local knowledge, Indigenous governance systems, informal economies, and community-defined values. Adaptation does not mean lowering sustainability standards. It means applying them in ways that are realistic, inclusive, and locally meaningful.

8. Proposed Framework for Community-Integrated Sustainable Tourism

Based on the analysis, this paper proposes a six-stage framework for integrating local community involvement into sustainable tourism. Figure 1 presents the Community-Integrated Sustainable Tourism Framework, which illustrates how local community involvement can be incorporated into sustainable tourism development. The framework shows a step-by-step process beginning with

community mapping, where local stakeholders, resources, needs, and risks are identified. This is followed by participatory planning, which ensures that residents are actively involved in tourism visioning, zoning, and decision-making. The next stage is capacity-building, where community members are trained in business, governance, hospitality, digital skills, and environmental stewardship. This leads to shared governance, where local representatives participate in tourism management and policy-making. The framework also emphasizes equitable benefit-sharing, ensuring that jobs, income, revenue, and opportunities are fairly distributed among community members. The final stage is community monitoring, where social, cultural, economic, and environmental impacts are continuously assessed. Together, these stages lead to sustainable tourism outcomes, including local empowerment, cultural preservation, environmental stewardship, economic equity, and destination resilience. The figure demonstrates that sustainable tourism is most effective when local communities are involved throughout the entire tourism development cycle rather than being consulted only after decisions have already been made.

Figure 1: Community-Integrated Sustainable Tourism framework



Note. The framework shows that local community involvement should be integrated across the full tourism development cycle, beginning with community mapping and continuing through participatory planning, capacity-building, shared governance, equitable benefit-sharing, and community monitoring.

9. Policy Implications

The findings of this study have important implications for governments, tourism planners, destination management organizations, NGOs, international development agencies, and private tourism businesses. First, governments should make community participation a legal requirement in tourism planning. Major tourism projects should not be approved without evidence of meaningful community consultation and consent. Second, destination management organizations should include community representatives in decision-making bodies. Local residents should have access to information about tourism plans, budgets, environmental impacts, and development agreements. Third, tourism policies should support local ownership and entrepreneurship through grants, microcredit, tax incentives, cooperative development, training, and market access. Fourth, tourism businesses should adopt local procurement policies. Buying locally produced food, crafts, materials, and services can significantly increase the local economic benefits of tourism. Fifth, cultural heritage protection should be community-led. Communities should control how their traditions, symbols, rituals, and knowledge are used in tourism. Sixth, tourism success should be measured through community well-being indicators. Visitor arrivals and revenue are not enough. Destinations should also measure resident satisfaction, local employment, income distribution, environmental quality, cultural protection, and housing affordability. Finally, international tourism standards should become more inclusive and adaptable. Global frameworks should guide sustainability, but local communities should help define what sustainability means in their own contexts.

10. Recommendations

Based on the findings, the following recommendations are proposed:

- i. Adopt community-centered tourism planning. Tourism authorities should involve local communities from the earliest stage of tourism development.

- ii. Promote local ownership. Communities should be supported to establish homestays, cooperatives, craft markets, guiding services, eco-lodges, and cultural centers.
- iii. Strengthen capacity-building. Training should focus on business skills, hospitality, digital marketing, environmental management, leadership, and legal awareness.
- iv. Create transparent benefit-sharing systems. Tourism income should support community development projects and local livelihoods.
- v. Protect cultural heritage. Communities should develop cultural protocols to prevent exploitation, misrepresentation, and inappropriate commercialization.
- vi. Reduce revenue leakage. Tourism businesses should prioritize local suppliers, workers, and community-owned enterprises.
- vii. Include marginalized groups. Women, youth, Indigenous peoples, informal workers, and poorer households should be represented in tourism decision-making.
- viii. Use community-based monitoring. Residents should participate in measuring tourism impacts and recommending improvements.
- ix. Adapt global standards to local realities. Sustainability frameworks should be flexible enough to support small and community-based tourism enterprises.
- x. Manage visitor numbers responsibly. Destinations should avoid overtourism by setting carrying-capacity limits and protecting resident quality of life.

11. Conclusion

This paper examined the integration of local community involvement in global sustainable tourism practices using a secondary-data-based qualitative approach. The study found that local communities are essential to sustainable tourism because they are custodians of culture, natural

resources, heritage, and social life. Their participation improves legitimacy, economic equity, cultural protection, environmental stewardship, and destination resilience. However, several challenges limit meaningful community involvement. These include tokenistic participation, unequal power relations, limited finance, weak technical capacity, poor governance, revenue leakage, cultural commodification, exclusion of marginalized groups, and conflicts between global standards and local realities. The paper argues that sustainable tourism must move beyond top-down planning and symbolic consultation. Local communities should be treated as co-creators, rights-holders, decision-makers, and primary beneficiaries of tourism development. Practical solutions include participatory planning, community ownership, equitable benefit-sharing, capacity-building, inclusive governance, cultural protocols, local supply-chain development, digital empowerment, community-based monitoring, and adaptive sustainability standards.

The proposed framework emphasizes six stages: community mapping, participatory planning, capacity-building, shared governance, equitable benefit-sharing, and community monitoring. These stages provide a practical pathway for integrating local communities into sustainable tourism systems. In conclusion, tourism cannot be sustainable if it benefits visitors and investors while marginalizing host communities. Genuine sustainable tourism requires a shift from destination marketing to destination stewardship, from external control to local empowerment, and from economic growth alone to community well-being. Local communities must not only be included in sustainable tourism; they must be placed at its center.

References

Ashley, C., Roe, D., & Goodwin, H. (2001). *Pro-poor tourism strategies: Making tourism work for the poor*. Overseas Development Institute.

Bramwell, B., & Lane, B. (2011). Critical research on the governance of tourism and sustainability. *Journal of Sustainable Tourism*, 19(4–5), 411–421. <https://doi.org/10.1080/09669582.2011.580586>

Butler, R. W. (1999). Sustainable tourism: A state-of-the-art review. *Tourism Geographies*, 1(1), 7–25. <https://doi.org/10.1080/14616689908721291>

Choi, H. C., & Sirakaya, E. (2006). Sustainability indicators for managing community tourism. *Tourism Management*, 27(6), 1274–1289. <https://doi.org/10.1016/j.tourman.2005.05.018>

Cole, S. (2006). Information and empowerment: The keys to achieving sustainable tourism. *Journal of Sustainable Tourism*, 14(6), 629–644. <https://doi.org/10.2167/jost607.0>

Dangi, T. B., & Jamal, T. (2016). An integrated approach to sustainable community-based tourism. *Sustainability*, 8(5), Article 475. <https://doi.org/10.3390/su8050475>

Dodds, R., & Butler, R. W. (Eds.). (2019). *Overtourism: Issues, realities and solutions*. De Gruyter.

Garrod, B. (2003). Local participation in the planning and management of ecotourism. In D. A. Fennell & R. K. Dowling (Eds.), *Ecotourism policy and planning* (pp. 33–57). CABI.

Global Sustainable Tourism Council. (2024). *GSTC destination criteria*. <https://www.gstcouncil.org/gstc-criteria/gstc-destination-criteria/>

Goodwin, H. (2016). *Responsible tourism: Using tourism for sustainable development* (2nd ed.). Goodfellow Publishers.

Hall, C. M. (2011). Policy learning and policy failure in sustainable tourism governance: From first- and second-order to third-order change? *Journal of Sustainable Tourism*, 19(4–5), 649–671. <https://doi.org/10.1080/09669582.2011.555555>

Jamal, T., & Getz, D. (1995). Collaboration theory and community tourism planning. *Annals of Tourism Research*, 22(1), 186–204. [https://doi.org/10.1016/0160-7383\(94\)00067-3](https://doi.org/10.1016/0160-7383(94)00067-3)

Mowforth, M., & Munt, I. (2016). *Tourism and sustainability: Development, globalisation and new tourism in the Third World* (4th ed.). Routledge.

Murphy, P. E. (1985). *Tourism: A community approach*. Methuen.

Nunkoo, R. (2015). Tourism development and trust in local government. *Tourism Management*, 46, 623–634. <https://doi.org/10.1016/j.tourman.2014.08.016>

Okazaki, E. (2008). A community-based tourism model: Its conception and use. *Journal of Sustainable Tourism*, 16(5), 511–529. <https://doi.org/10.1080/09669580802159594>

Scheyvens, R. (1999). Ecotourism and the empowerment of local communities. *Tourism Management*, 20(2), 245–249. [https://doi.org/10.1016/S0261-5177\(98\)00069-7](https://doi.org/10.1016/S0261-5177(98)00069-7)

Sharpley, R. (2009). *Tourism development and the environment: Beyond sustainability?* Earthscan.

Simpson, M. C. (2008). Community benefit tourism initiatives: A conceptual oxymoron? *Tourism Management*, 29(1), 1–18. <https://doi.org/10.1016/j.tourman.2007.06.005>

Tosun, C. (2000). Limits to community participation

in the tourism development process in developing countries. *Tourism Management*, 21(6), 613–633. [https://doi.org/10.1016/S0261-5177\(00\)00009-1](https://doi.org/10.1016/S0261-5177(00)00009-1)

United Nations. (2015). *Transforming our world: The 2030 Agenda for Sustainable Development*. <https://sdgs.un.org/2030agenda>

UNWTO. (2004). *Indicators of sustainable development for tourism destinations: A guidebook*. World Tourism Organization.

UNWTO. (2013). *Sustainable tourism for development guidebook*. World Tourism Organization.

UNWTO. (2023). *Tourism and the sustainable development goals*. World Tourism Organization.

UNCTAD. (2023). *Guiding principles for sustainable investment in tourism*. United Nations Conference on